

# Fire Starter Kit

- 6000 Striker #PKFS6000
- 20,000 Striker #PKFS20000



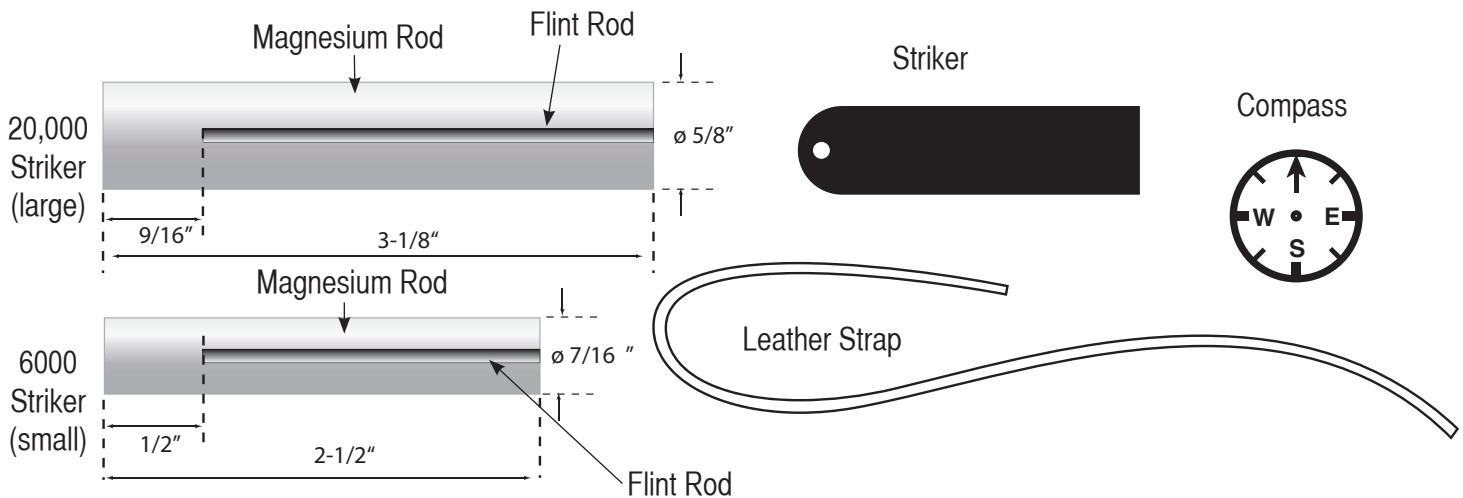
## Kit Features

- Use this kit to start a fire instead of matches (works in any weather).
- Long lasting, 6000 or 20,000 strikes per kit.
- Leather Strap to carry and mount striker.
- Each kit contains a mini compass.

## Required Accessories

- 4 Prong drive center or similar drive (5/8 size preferred)
- Heavy duty 60° live center
- Drill Bit: 7/16" for small kit #PKDB716
- Drill Bit: 5/8" for large kit #PKSB58
- Drill Bit: 15mm (or 19/32") for compass kit #PKATOM-DB
- Drill Bit: 1/4" for strap hole
- Insta-cure glue (cyanoacrylate) #PKGLUE61 or similar

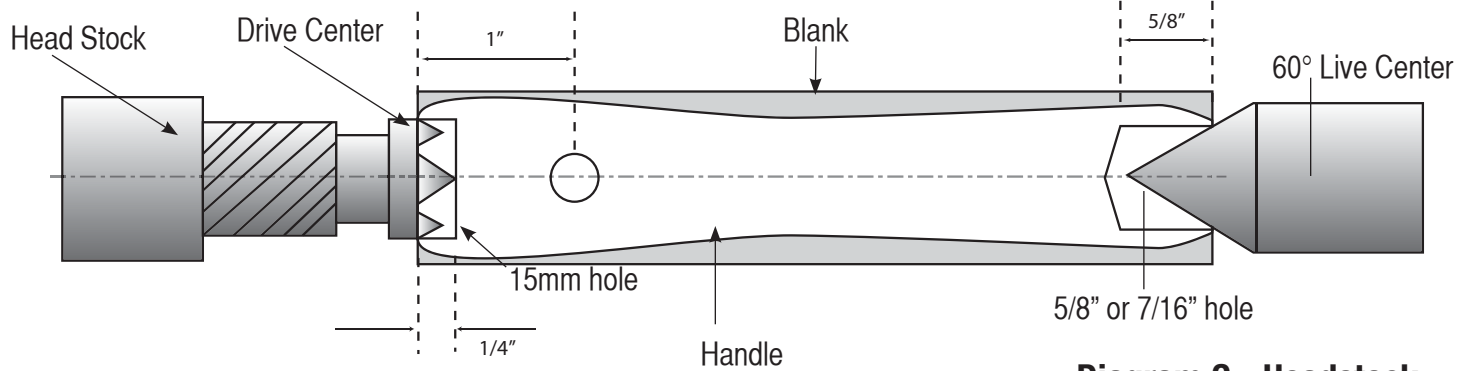
## Diagram A - Parts List



## Preparing the Blank

- Cut a blank, at least 1" square x 3-1/2" long for the large kit.  
Cut a blank, at least 3/4" square x 3" for small kit.
- Mark the center of both end surfaces of the blank.
- Drill a 5/8" center hole, 5/8" deep in one end of the large blank.
- Drill a 7/16" center hole, 5/8" deep in one end of the blank for the small blank.
- Drill a 15mm or 19/32" center hole in the opposite end of the blank, 1/4" deep for the compass.
- Mark the blank. 1" from compass end. Drill a 1/4" center hole through the blank for the leather strap.  
Use a larger bit to chamfer one side of the hole where the strap's knot is tied.

**Diagram B - Turning the Blank**



**Turning the Blank**

- Insert a drive center into the head stock and a heavy duty 60° center into the tail stock (See Dia. C)
- Lock the blank between centers (See Dia. B) do not apply excessive pressure on the wood. It may split at the ends if turned too thin.
- Turn the blank into a handle profile. Do not reduce the wood at the ends too thin, it will cause the wood to split under pressure.
- Sand and finish the handle. Use Danish or similar oil to final coat the project.

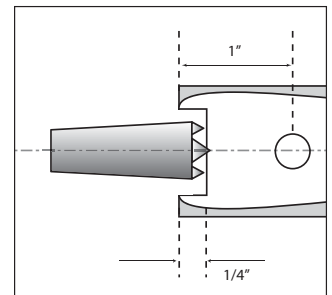
**Assembly**

- Use a few drops of glue in the 15mm hole, and mount the compass flush.
- Use a few drops of glue inside the hole at the opposite end. Insert the magnesium rod up to the flint rod.
- Insert the leather strap through the hole. Tie a knot over the chamfered hole.
- Insert the strap through the striker hole, tie a knot.

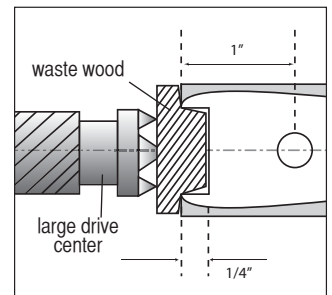
**How to Use**

- Position the rod so that the tip is resting on the ground and the flint is facing up.
- Press hard on the striker with your thumb sliding downward along the flint towards the kindling.
- Kindling should be close to the tip of the fire starter.
- The FLINT sparks are hot enough to light any fine material such as moss, dry grass, pine needles, steel wool, cloth, paper, etc.
- Use the Magnesium in wet or windy conditions or to enhance and accelerate starting your fire - It ignites more easily than kindling and burns white-hot.
- Scrape the MAGNESIUM into shavings with the sharp edge of the striker, then pile together and ignite. The Magnesium will burn with white-hot fire of about 5,400 degrees.

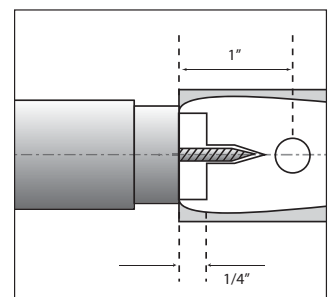
**Diagram C - Headstock Drive Center Options**



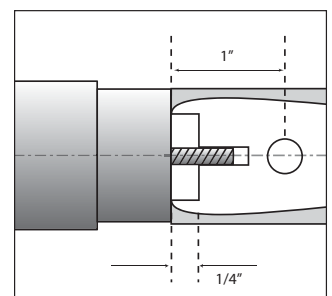
Small Drive Center #LCENTDC1, 2



Jam Chuck



Small Screw Chuck



Bottle Stopper Chuck

